

# Xcalibur 10in planer

We give **The Woodsmith** a break from answering your questions to have a day with this new Xcalibur offering

**W**oodford Woodworking Machinery has just increased its Xcalibur range with the introduction of two new planer thicknessers and I've recently been trying out the smaller 10inch model in my workshop. This is another solid Xcalibur machine, for solid read heavy, with cast iron infeed, outfeed table and planer bed, supported by a substantial lifting tube; all together this adds up to about 150kgs. So if you need to move it round the workshop it would need a heavy-duty mobile base.



Keith Smith

**ON TEST**



Spec sheet	
Planer tables	1085 x 250mm
Thicknesser table	600 x 248mm
Tilting alloy fence	720mm long with adjustable stop so that it can be accurately set to 90°
Cutter block	75mm diameter with three resharpenable HSS knives
Cutter block speed	3750rpm
Maximum r thicknessing width	248mm
Maximum thicknessing capacity	175mm
Maximum planing width	235mm

machine. Both the infeed and outfeed rollers are metal, the infeed being toothed for a better grip and the outfeed smooth so it doesn't mark the surface of the planed timber.

Electrical connection is via a no-volt release switch with an additional cut-off switch by the roller engagement lever. Once pressed, the switch locks in place and

**Size**  
Will it fit in your workshop? Dimensions for the machine are 1085mm long by 450mm deep, with the switch protruding an extra 100mm from the front. However, as with all these machines, when using it, the fence-supporting plate protrudes from the back of the machine; this one by 250mm. So unless you can make a convenient hole in the wall you need to allow 700mm for the overall depth. If you mount the machine on

a mobile base, when not in use, the fence can be fully extended over the cutter block and the machine can be pushed up against a wall.

**Specs**  
An 1100 watt electrically braked induction motor drives the cutter via twin v-belts. Drive to the feed rollers is via chain drive; with a good size flywheel to give a more even feed. The feed rollers are turned on and off with a lever at the infeed end of the

Massive lifting tube supports the tables



## NEW YANKEE WORKSHOP SAW...



Keith Smith tested the Xcalibur 10in table saw, as used in the New Yankee Workshop, in our June 2005 issue.

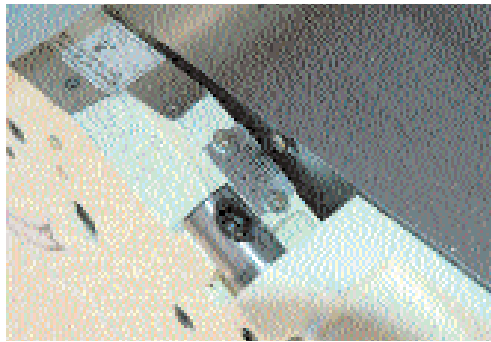
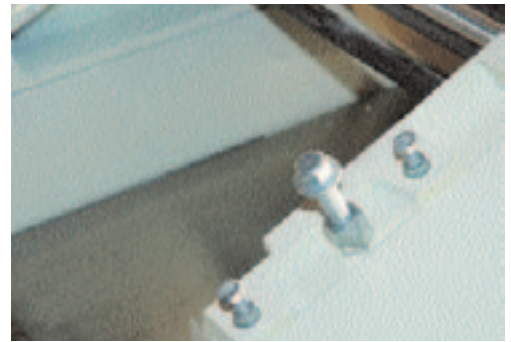


Table adjustment calibrations



It only takes a minute to release and flip up the tables for thickening

needs to be released before the machine will start again; so it's provided primarily as an additional safety feature. The tilting tables are fitted with a safety switch so that the machine can only be started with the tables up, when the dust extraction hood is in the thickening position.

Dust extraction is via a 100mm outlet, the metal extraction hood swings effortlessly from its planing to thickening positions. The extraction has been really well designed, not just an afterthought, and is one of the best I have seen, capturing the vast majority of the dust and chips produced.

thickening, and with the dust extraction running noise levels will go up to about 108dB; so ear protection should be worn.

Converting this type of machine from planing to thickening is often a pain, but with the Xcalibur it took me less than a minute. Only the fence needs to be removed so that the tables can be tilted out of the way and the dust extraction assembly swung into its thickening position.

### TIP: WET 'N' DRY NEW TABLES

Although the tables are smooth they do seem to grip the timber, especially an abrasive wood like oak. It could be an anti-rust coating but the answer is to get some 250 grit wet and dry paper and, using a small amount of white spirit for lubrication, rub down the table. Remove the slurry with a clean cloth and keep repeating until the surface feels smooth and no further residue is being removed by the cloth. Then use 00 grade wire wool and lubricating wax; it's also worth treating the planer tables in the same way. De-grease the outfeed roller regularly and give it a light rub over with emery cloth to help improve its grip. Treating the tables in this way will transform the performance of this machine.

**“The extraction has been really well designed, not just an afterthought, and is one of the best I have seen”**

This leads me to my only real criticism of the machine, which is its feed mechanism. I have been using the machine to make some oak kitchen units and I have found that oak needs some 'encouragement' (a push) to get it to feed smoothly through the machine. This is the problem with metal feed rollers, they are very durable but don't have the same grip as rubber. Fortunately there's a solution, see Tip.

With a toothed infeed roller there is always a compromise between removing too little material which can leave the marks created by the infeed roller, and removing too much material which stresses the machine. With the Xcalibur I found that removing 1-1.5mm gave the best results.

## USEFUL INFORMATION

**Price: £498.99**  
**Woodford Woodworking Machinery**  
**0161 480 2800**  
**www.woodfordwm.co.uk**

Extraction in place for thickening. Wet 'n' dry table treatment gave improved performance, especially with abrasive woods such as oak



## Ww verdict

This is a well built machine which should give many years of excellent service. It's well-proportioned tables make for accurate planing and it has an exceptional thickening capacity. With the proviso that the tables do need a little work, I can thoroughly recommend this machine, and at £498.99 it's very good value.

RATING	1 2 3 4 5
Value	
Performance	